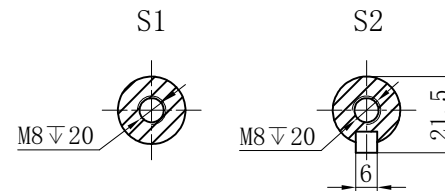
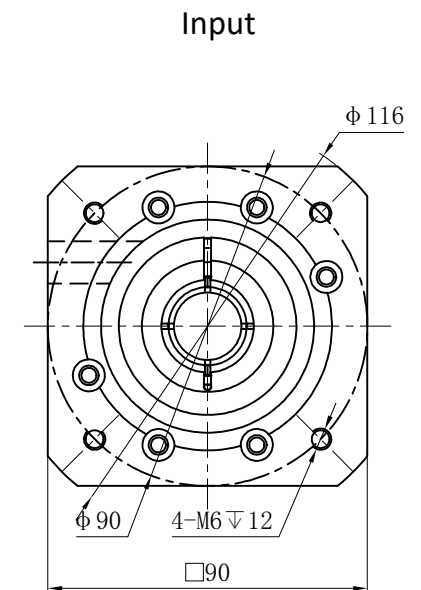
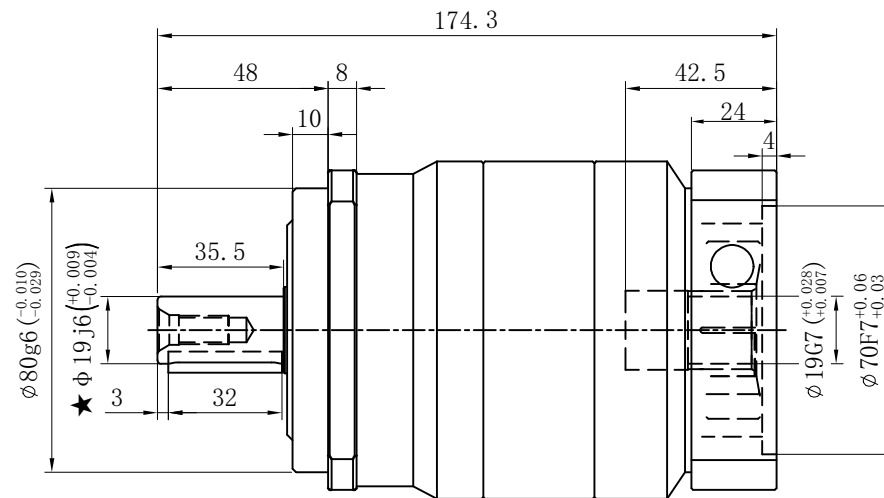
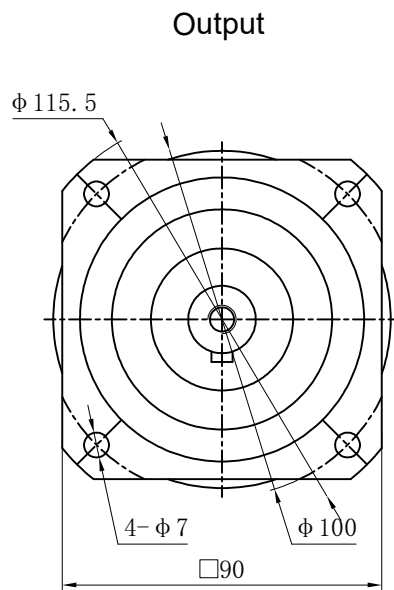


Customer name:



Transmission ratio	(<u>A</u>):1	Mass moments of inertia	(<u>B</u>)Kg.cm ²
Rated output torque	(<u>C</u>)Nm	Max.output torque	(<u>D</u>)Nm
Rated input speed	3000rpm	Max input speed	6000rpm
Max.radial force	3250N	Max.axial force	1625N
Efficiency	≥ 94%	Operating temperature	-20°~+90°
Mounting position	Any	Lubrication method	Synthetic grease
Weight ±3%	5.1Kg	Service life	20000h
Standard backlash	≤ -- arcmin	Protection class	IP65
Motor power		Noise level	63dB
Motor dimensions			

Ratio	A	B	C	D	Sign/Date	Ratio	A	B	C	D
	40	0.47	120	215		100	0.44	100	180	
	35	0.47	135	240		80	0.44	120	215	
	30	0.47	140	250		70	0.44	135	240	
	25	0.47	150	270		60	0.44	140	250	
	20	0.47	110	195		50	0.44	150	270	
	15	0.47	100	180						

Note					Precision planetary reducer	GCB090A	
	Mark	No.	Sign	Date			
	DRAW					GCB090A-L2	
	CHEC						
	APPR					Shaft Type	Precision
	RULE						

Above specifications are for standard reducer and may be subject to change without notice.