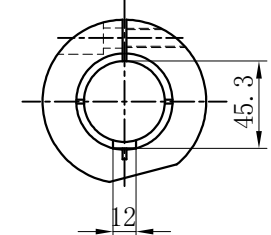
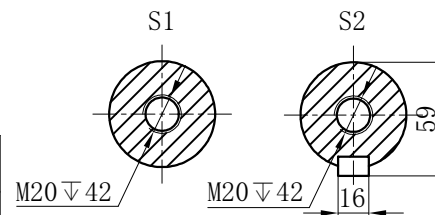
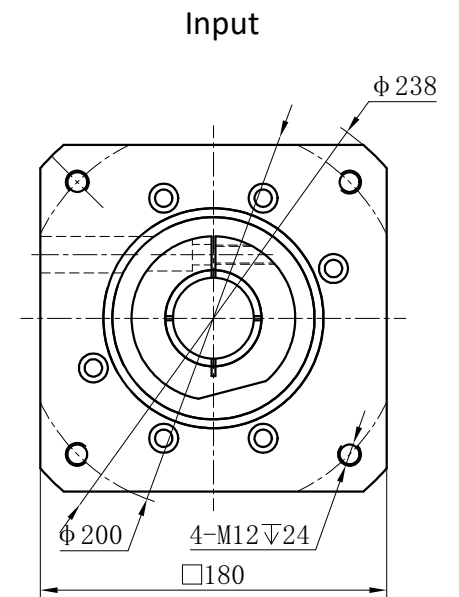
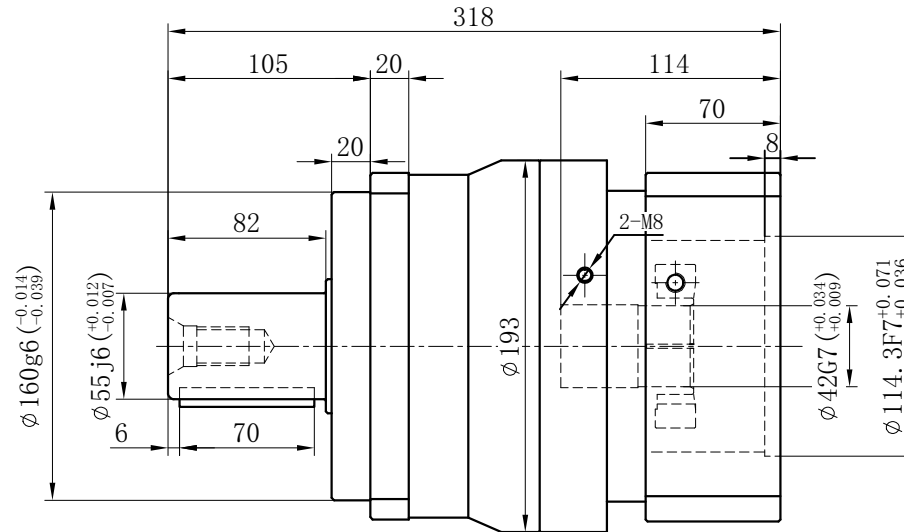
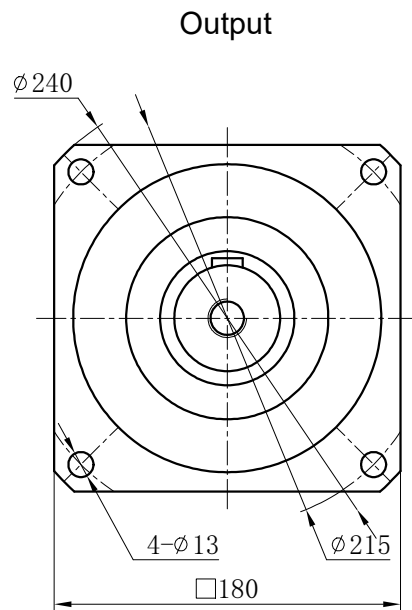


Customer name:



Transmission ratio	( <u> A</u> ):1	Mass moments of inertia	( <u> B</u> )Kg.cm <sup>2</sup>
Rated output torque	( <u> C</u> )Nm	Max.output torque	( <u> D</u> )Nm
Rated input speed	2000rpm	Max input speed	4000rpm
Max.radial force	14100N	Max.axial force	7050N
Efficiency	≥ 97%	Operating temperature	-20°~+90°
Mounting position	Any	Lubrication method	Synthetic grease
Weight ±3%	--Kg	Service life	20000h
Standard backlash	≤ 5 arcmin	Protection class	IP65
Motor power		Noise level	67dB
Motor dimensions			

	10	22.51	900	1620	Sign/Date					
	7	22.48	1100	1980			8	22.59	1000	1800
	5	23.29	1200	2160			6	22.75	1100	1980
	4	23.67	1050	1890			3	28.98	588	1058
Ratio	A	B	C	D		Ratio	A	B	C	D
Note						Precision planetary reducer	GCB180A			
Mark	No.	Sign	Date				GCB180A-L1			
							Shaft Type	Precision		

Above specifications are for standard reducer and may be subject to change without notice.