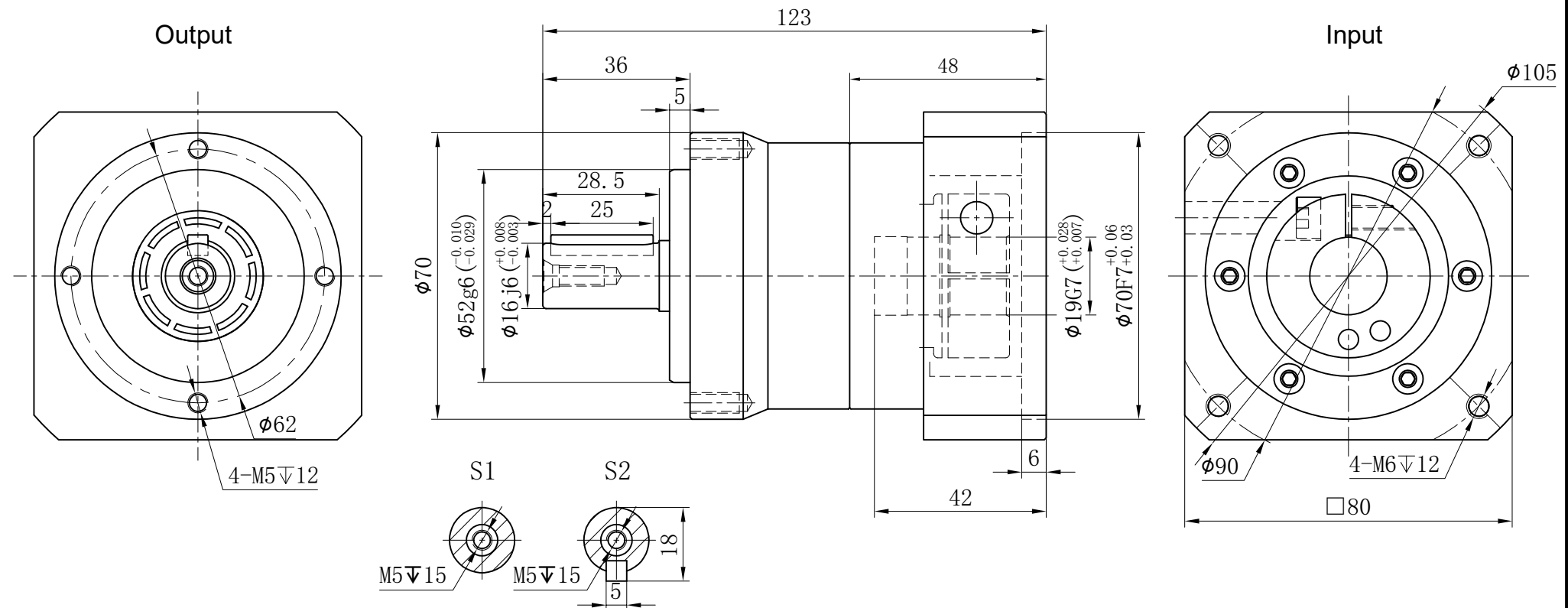


Customer Name:



Transmission Ratio	(A):1	Mass Moments Of Inertia	(B)Kg.cm ²
Rated Output Torque	(C)Nm	Max Output Torque	(D)Nm
Rated Input Speed	3000rpm	Max Input Speed	5000rpm
Max Radial Force	1530N	Max.axial Force	765N
Efficiency	≥ 97%	Operating Temperature	-20°~+90°
Mounting Position	Any	Lubrication Method	Synthetic grease
Weight ±3%	1.3Kg	Service Life	20000h
Standard Backlash	≤ 5 arcmin	Protection Class	IP65
Motor Power	-- KW	Noise Level	58dB
Motor Dimensions			

	3	0.16	40	72	Sign/Date	7	0.13	45	81
	4	0.14	45	81		8	0.13	45	81
	5	0.13	55	99		10	0.13	35	63
	6	0.13	50	90					
Ratio	A	B	C	D	Ratio	A	B	C	D
Note						Precision Planetary Reducer	GCE070		
	Mark	No.	Sign	Date		GCE070-L1			
		DRAW				Shaft Type	Precision		
		CHEC							
		APPR							
		RULE							

Above specifications are for standard reducer and may be subject to change without notice.