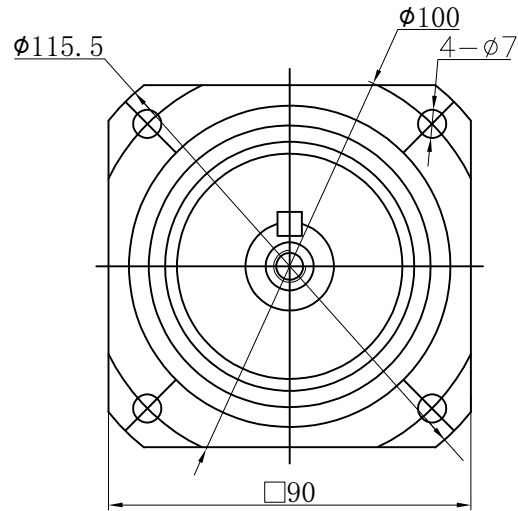
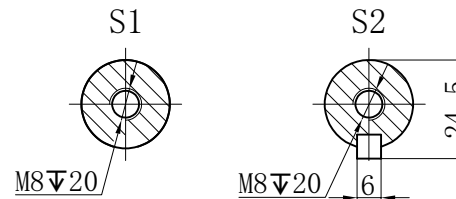
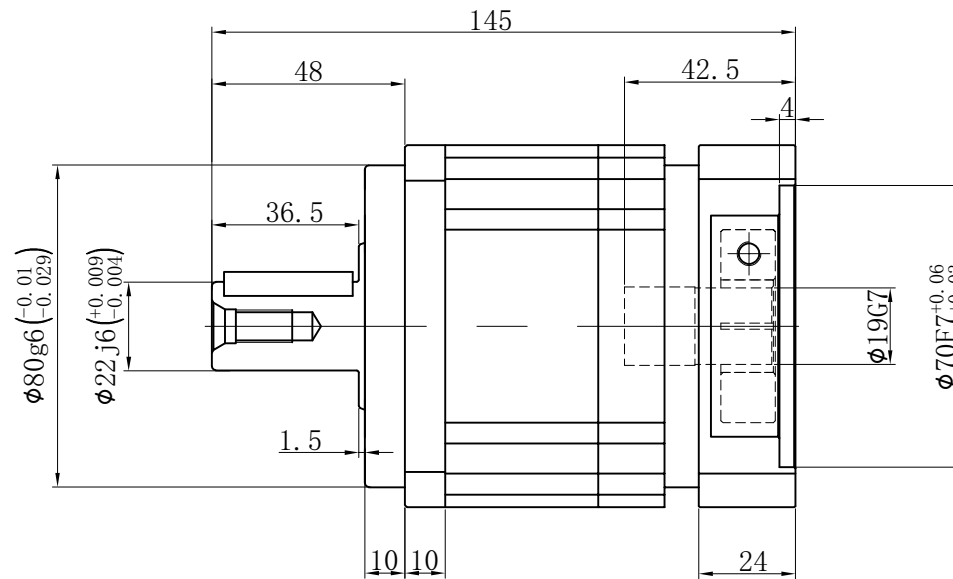
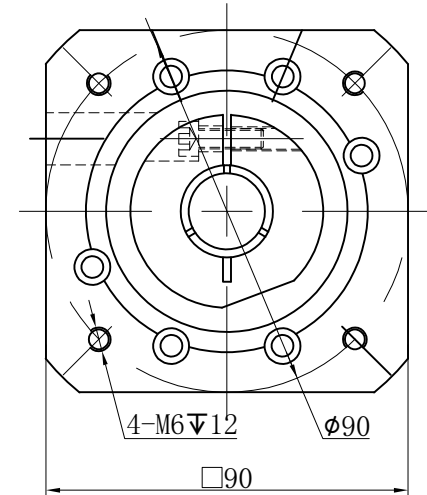


Customer name:

Output



Input



|                     |            |                         |                         |
|---------------------|------------|-------------------------|-------------------------|
| Transmission ratio  | ( A ):1    | Mass moments of inertia | ( B )Kg.cm <sup>2</sup> |
| Rated output torque | ( C )Nm    | Max.output torque       | ( D )Nm                 |
| Rated input speed   | 4000rpm    | Max input speed         | 8000rpm                 |
| Max.radial force    | 3250N      | Max.axial force         | 1625N                   |
| Efficiency          | ≥ 97%      | Operating temperature   | -20°~+90°               |
| Mounting position   | Any        | Lubrication method      | Synthetic grease        |
| Weight ±3%          | 3.7Kg      | Service life            | 20000h                  |
| Standard backlash   | ≤ 5 arcmin | Protection class        | IP65                    |
| Motor power         |            | Noise level             | 60dB                    |
| Motor dimensions    |            |                         |                         |

|       |    |      |     |     |           |       |   |      |     |     |
|-------|----|------|-----|-----|-----------|-------|---|------|-----|-----|
|       | 10 | 0.44 | 100 | 180 | Sign/Date |       |   |      |     |     |
|       | 7  | 0.45 | 140 | 252 |           |       | 8 | 0.44 | 120 | 216 |
|       | 5  | 0.47 | 160 | 280 |           |       | 6 | 0.45 | 150 | 270 |
|       | 4  | 0.48 | 140 | 252 |           |       | 3 | 0.61 | 130 | 234 |
| Ratio | A  | B    | C   | D   |           | Ratio | A | B    | C   | D   |

|      |     |      |      |  |  |                             |            |           |
|------|-----|------|------|--|--|-----------------------------|------------|-----------|
| Note |     |      |      |  |  | Precision planetary reducer | GB090      |           |
| Mark | No. | Sign | Date |  |  |                             | GB090-L1   |           |
|      |     |      |      |  |  |                             | Shaft Type | Precision |
|      |     |      |      |  |  |                             |            |           |
|      |     |      |      |  |  |                             |            |           |

Above specifications are for standard reducer and may be subject to change without notice.