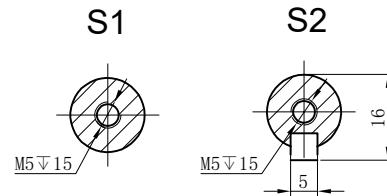
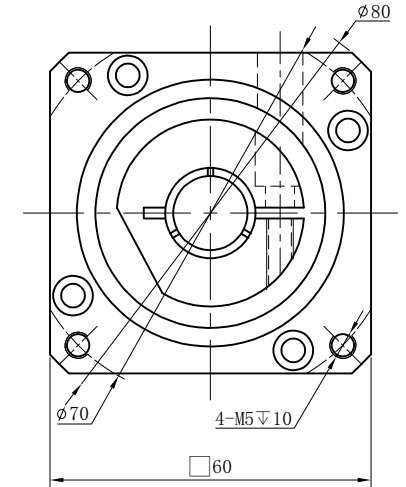
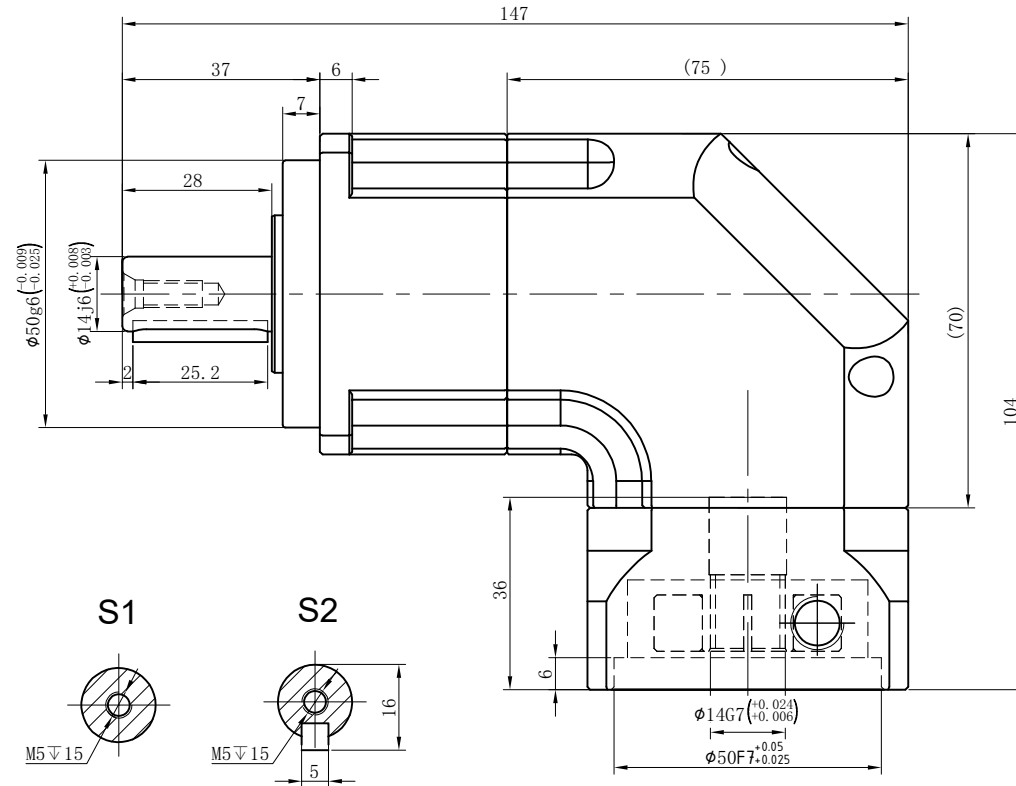
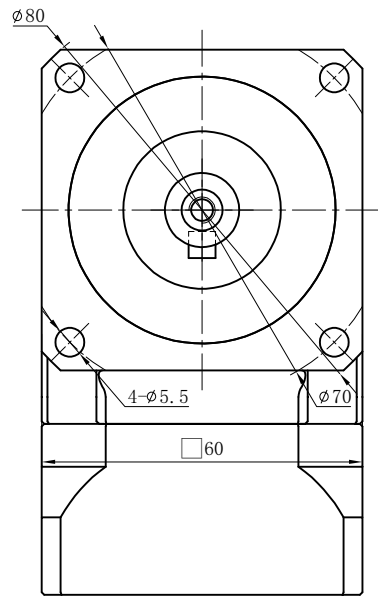



Customer Name:

Output

Input



Transmission Ratio	(<u> A</u>):1	Mass Moments Of Inertia	(<u> B</u>)Kg.cm ²	3	0.35	36	64.8	Sign/Date	4	0.35	48	86.4	
Rated Output Torque	(<u> C</u>)Nm	Max Output Torque	(<u> D</u>)Nm	5	0.35	60	108		6	0.35	55	99	
Rated Input Speed	5000rpm	Max Input Speed	10000rpm	7	0.35	50	90		8	0.35	45	81	
Max Radial Force	1530N	Max Axial Force	765N	10	0.35	40	72		12	0.07	55	99	
Efficiency	≥ 95%	Operating Temperature	-20°~+90°	14	0.07	42	75.6		16	0.07	45	81	
				20	0.07	40	72						
Mounting Position	Any	Lubrication Method	Synthetic grease	Ratio	A	B	C	D	Ratio	A	B	C	D
Weight ±3%	1.5Kg	Service Life	20000h	Note					Precision Planetary Reducer	GBR060			
Standard Backlash	6 arcmin	Protection Class	IP65	Mark	No.	Sign	Date			GBR060-L1			
Motor Power	-- KW	Noise Level	63dB							Shaft Type	Precision		
Motor Dimensions													

Above specifications are for standard reducer and may be subject to change without notice.